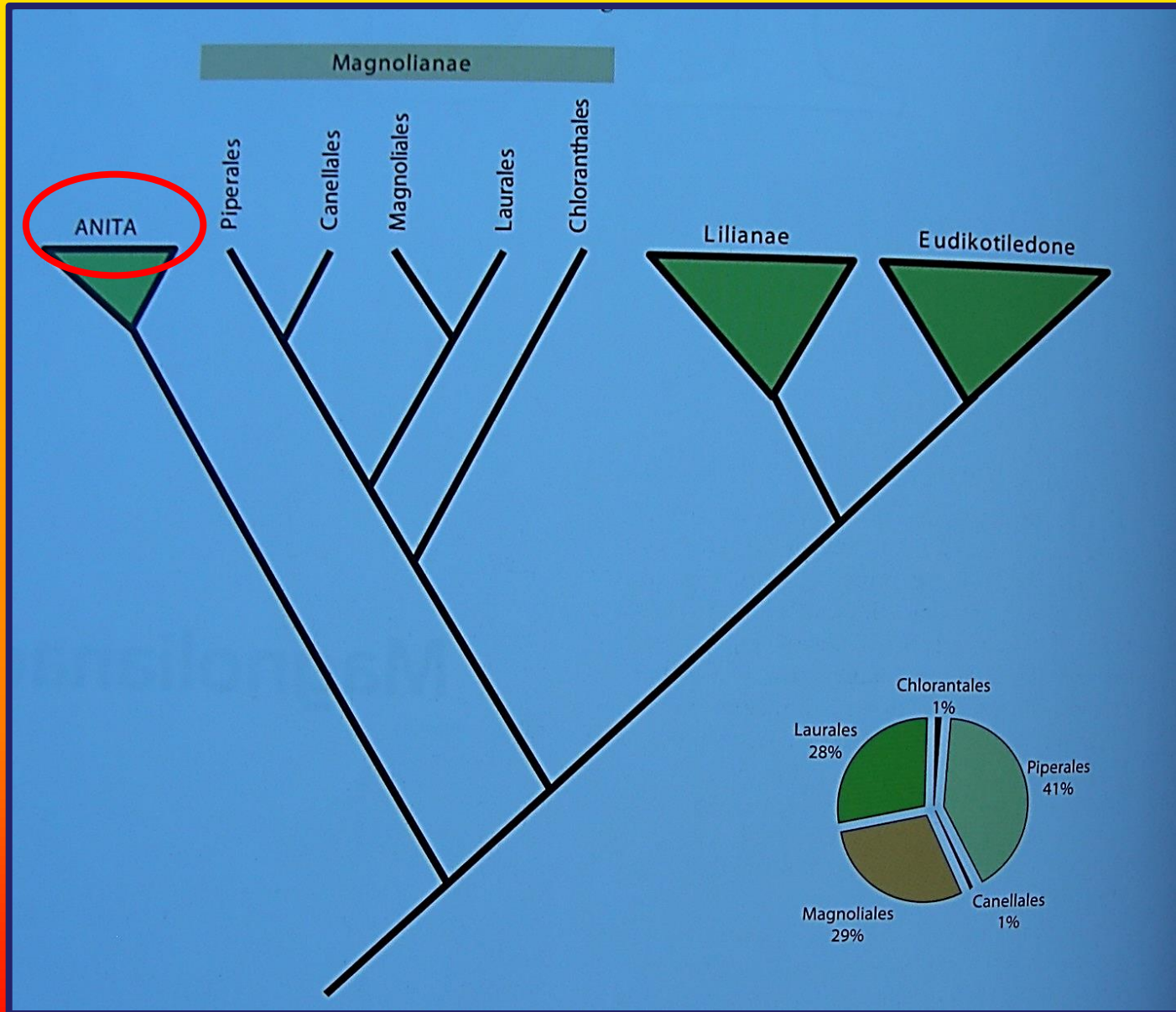


ANITA



ANITA

(Bazalne porodice)

Ženska jedinka



Muška jedinka



Amborella

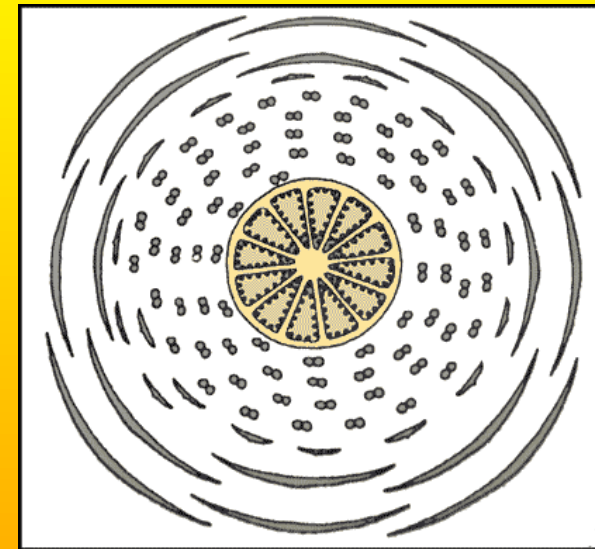


Austrobailleya

Red: Nymphaeales

fam. Nymphaeaceae

g. *Nymphaea* & *Nuphar*



Nymphaea alba- bijeli lokvanj

*K₂+2 C ∞ A ∞ G(∞)

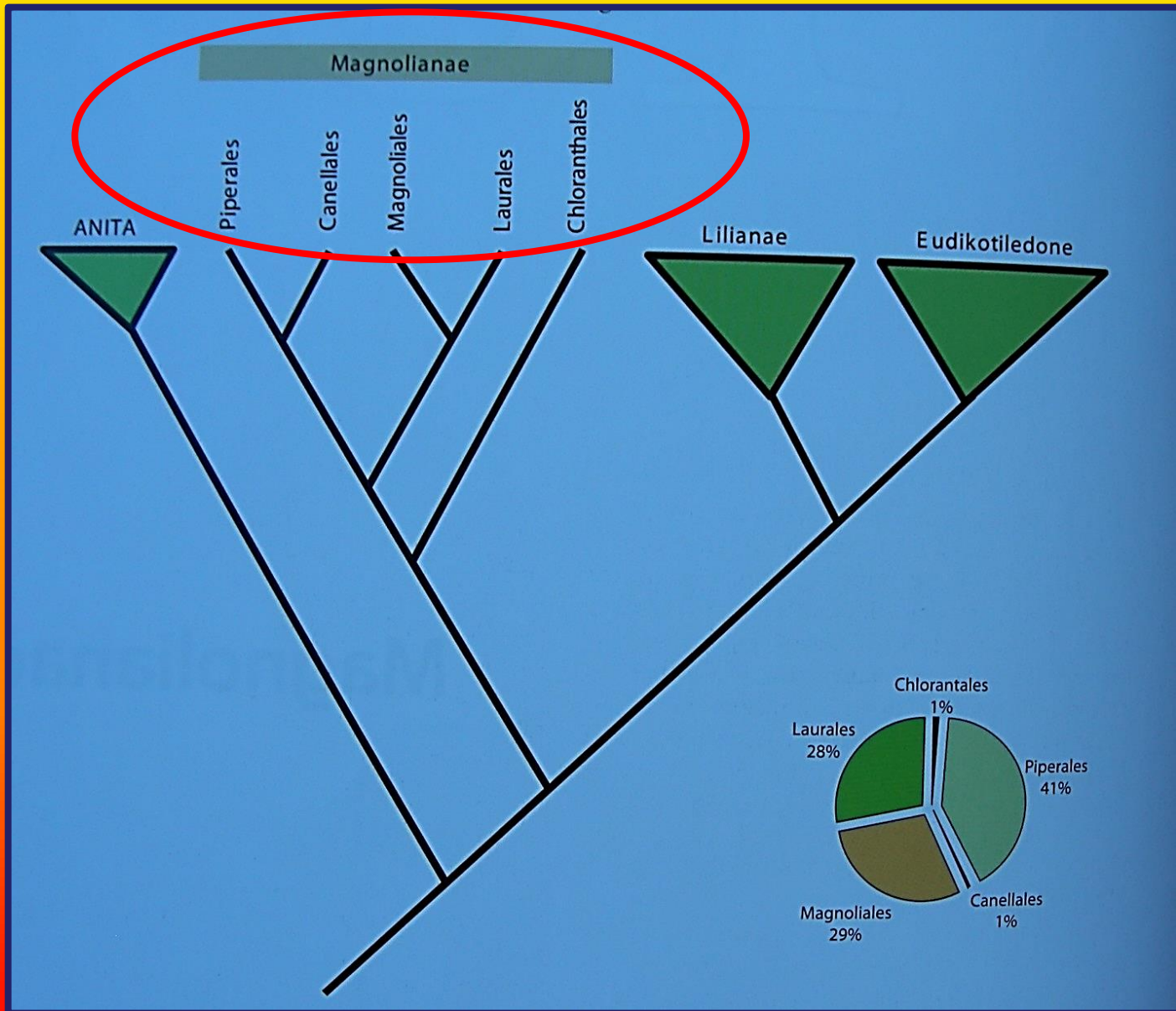


*K5 C ∞ A ∞ G(∞)



Nuphar luteum- žuti lokvanj

MAGNOLIANAE



Subordinaciona klasifikacija

- **Piperales (Aristolochiaceae, Piperaceae)**
- Canellales (Canellaceae)
- Magnoliales (Magnoliaceae, Myristicaceae)
- **Lurales (Lauraceae)**
- Chloranthales (Chloranthaceae)

Crvenom bojom su označeni taksoni zastupljeni u našoj nativnoj flori.

Red: Piperales

fam. *Aristolochiaceae*

g. *Aristolochia* (vučja jabuka) & *Asarum* (kopitnjak)



gimnostemium

↑P(6) [A(6) G/(6)]



Aristolochia rotunda



Aristolochia clematitis

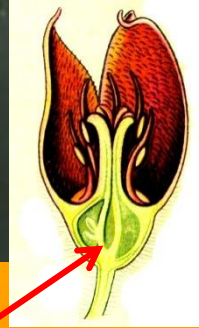
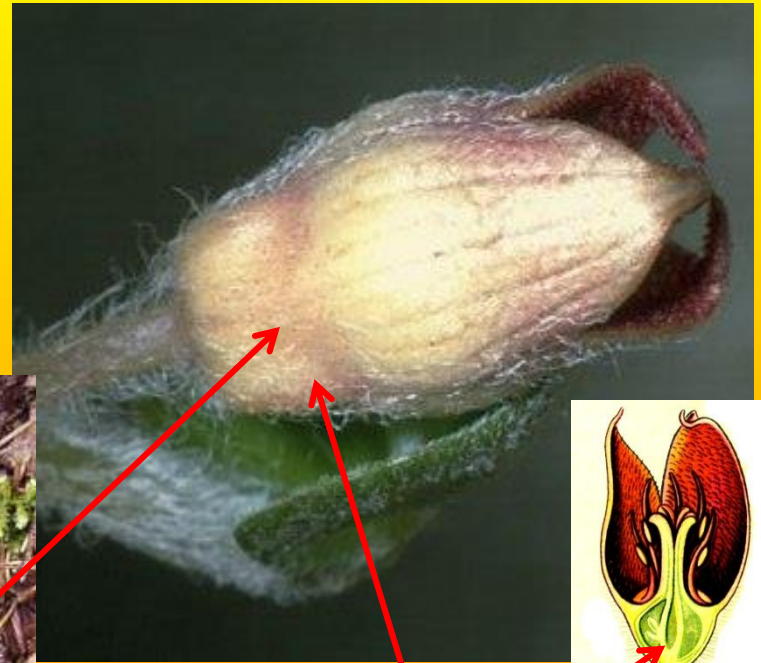


Podrasla plodnica

g. *Asarum*



*P(3) A6+6 G/(6)



Podrasla
plodnica



Asarum europaeum (kopitnjak)

Red: Piperales

Fam: Piperaceae

g. *Piper*



P0 A3+3 G(3)

P0 A2 G(3)



Jednosjemena
koštunica!

Piper nigrum- biber

Red: Magnoliales

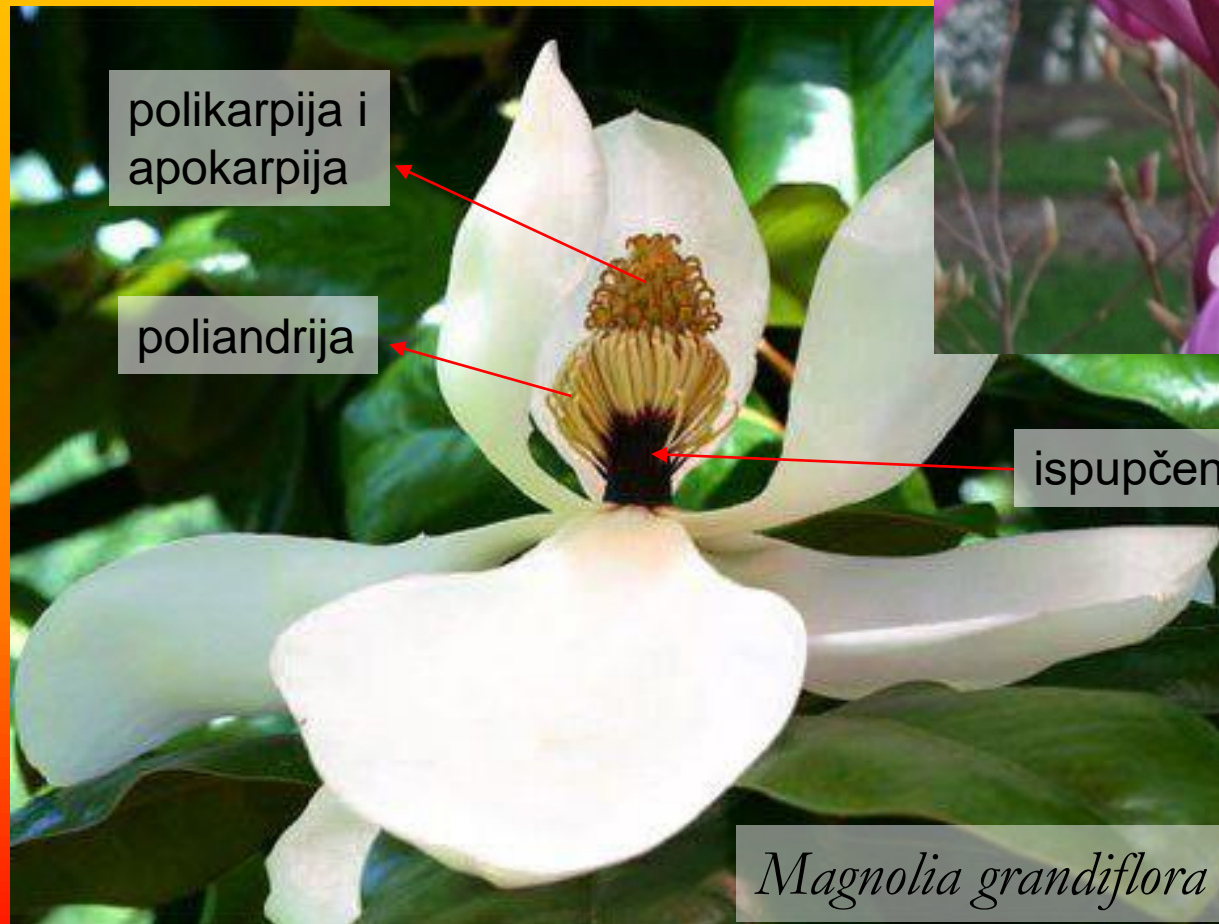
fam. Magnoliaceae

g. **Magnolia**, g. Liriodendron

***P₃₊₃₊₃ A_∞G_∞**



Magnolia liliflora



polikarpija i
apokarpija

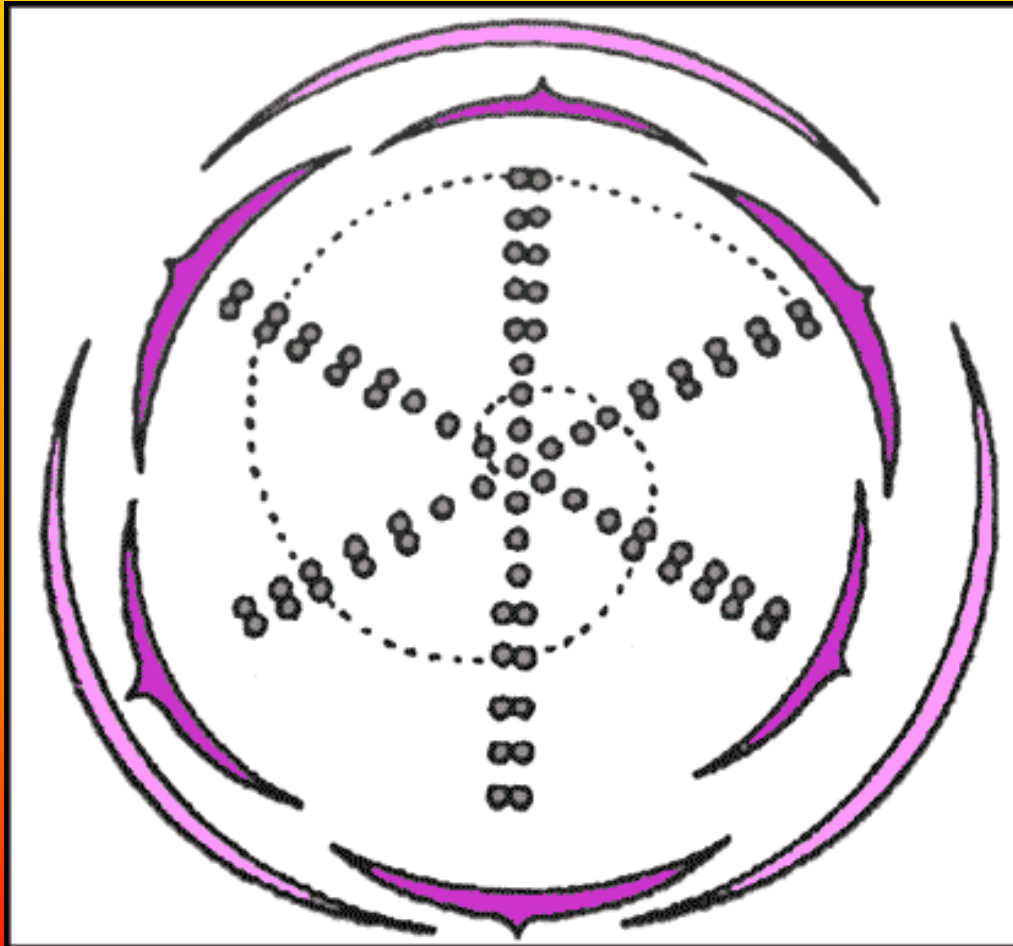
poliandrija

ispupčeno cvjetišće

Magnolia grandiflora

g. Liriodendron

*C3 K3+3 A ∞ G ∞



Liriodendron tulipifera

Red: Magnoliales
fam: Myristicaceae
Myristica fragrans
(muškartni oraščić)

*P(3) A(8-12)

*P(3) G 1



Red: Laurales



- Fam: Lauraceae
g. *Laurus* (lovor) &
Cinnamomum (cimet)

***P4 A12**

Laurus nobilis- lovor (dvodom!)



***P4 G(3) A2-4st G(3)**



Cinnamomum zeylanicum- cimet
Jednodoma biljka, sa dvopolnim cvjetovima

***P6 A12 G**